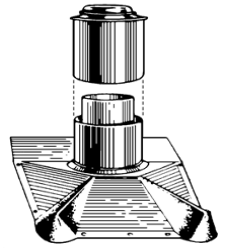


F.J. MOORE

MFG. CO.

500 Washington Street West
Cannon Falls, MN 55009
(800) 658-2331 Fax (507) 263-4439

www.fjmooremfg.com

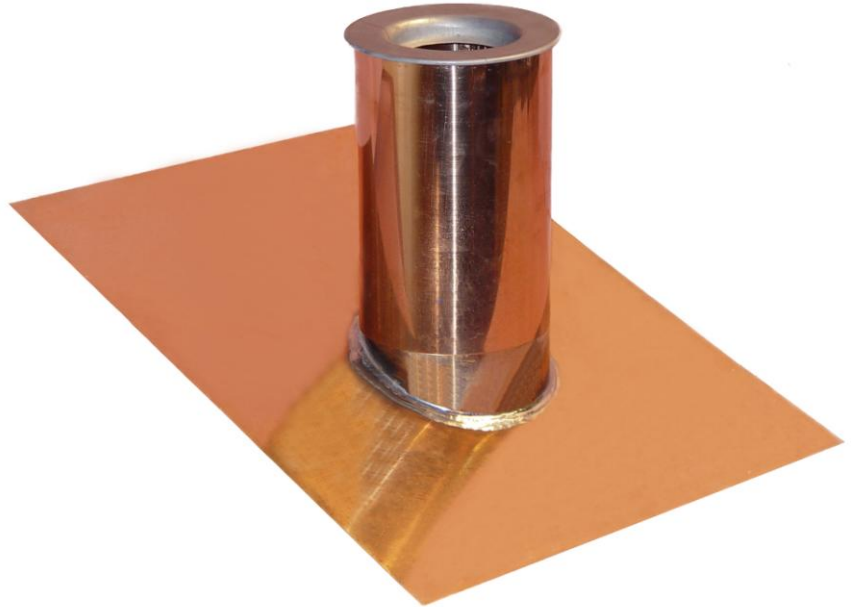


PRODUCT DATA SHEET

No.2 FM Special Pitch - Copper

DESCRIPTION

- ◆ Frost resistant design prevents vent closure.
- ◆ Fixed Pitch Per Contractor Specification.
- ◆ Patented two piece telescopic cover-all design provides complete enclosure of DWV pipe and roof penetration point.
- ◆ Permanent three point seal unaffected by daily roof movement and structure settling.
- ◆ No.2 style, flat profile lead top, forms to DWV pipe I.D.
- ◆ Fits slate, clay tile, cedar shake and shingled roofs.
- ◆ Suitable for new construction and tear-off.
- ◆ Impervious to all extreme weather and storm conditions.
- ◆ 10 Year warranty when properly installed.



PHYSICAL PROPERTIES

- ◆ 16 oz. Copper.
- ◆ Lead cap stamped 2-1/2 lb. chemical sheet, 99.6% pure.
- ◆ Flat profile top (No.2 style).

Product Code	DWV Pipe	Pitch Range	Base Length	Base Width	Top Height	Sleeve Travel
2" No. 2 FM SP	2"	Fixed per Contractor Spec	12.5"	10.3"	7"	1 - 3"
3" No. 2 FM SP	3"		13.5"	12"	7"	1 - 3"
4" No. 2 FM SP	4"		16.5"	15"	7"	1 - 3"
5" No. 2 FM SP	5"		20"	15"	7"	1 - 3"

INSTALLATION

1. Cut vent pipe approximately 2" above top of base sleeve to allow for roof movement (expansion and contraction).
2. Place flange over pipe, rotate under at least one row of shingles.
3. Center base sleeve around DWV pipe so there is equal air space around perimeter.
4. Install top sleeve. Press inside lip of lead cap orifice against DWV pipe interior wall.
5. Nail base flashing to roof.

HANDLING NOTES

- ◆ Avoid sources of physical damage during handling and transporting.
- ◆ Material Safety Data Sheet available upon request.